

# CES and CESD Factory Sealed Receptacles

## 30 and 60 Amp Pin and Sleeve. Explosionproof.

Delayed-Action Safety Construction with Slide-Lok® Design. Pressure Wire Terminals.

NEC/CEC — 30 Amp CES and CESD:  
Class I, Division 1 and 2, Groups C, D

NEC/CEC — 60 Amp CESD:  
Class I, Division 1 and 2, Groups D

### Applications

- Locations where receptacles are used with stationary or portable electrically operated devices such as:
  - Lighting systems
  - Conveyors
  - Heaters
  - Motor-generator sets
  - Air conditioners
  - Compressors
  - Pumps
- Class I: classified locations such as:
  - Petrochemical plants
  - Petroleum refineries
  - Paint and chemical plants
  - Any location where ignitable vapors or gases are present

### Features

- Factory sealed. No external seals required. Arcing is safely confined to receptacle interior.
- Energized receptacle contacts deeply recessed to reduce danger of accidental touching.
- Style 2 (shell and extra pole) grounding.
- Spring door keeps dust out of receptacle when plug is not in use.
- Unique design brass contacts exert constant pressure along entire contact surface and provide superior electrical contact.
- Contacts have beryllium copper wire springs.
- Plug mechanical cable clamps prevent strain on cables; they meet or exceed UL strain relief pull-out requirements.
- Neoprene bushing compressed by cable collar prevents entrance of water.
- Insulators provide superior dielectric and mechanical strength and lowest arc tracking.
- Smooth, rounded integral bushing in each hub protects conductor insulation.
- Delayed action construction. To operate, insert plug to first stop, move Slide-Lok® slide to right and push plug fully forward.
- CPH plug fits Powertite™ Series hazardous location receptacles.

### Standard Materials

- Receptacle and cover: copperfree (4/10 of 1% max.) aluminum
- Mounting box: malleable iron
- Insulating blocks: fiber glass reinforced polyester

### Standard Finishes

- Malleable iron mounting bodies: triple-coat (1) zinc electroplate, (2) chromate and (3) epoxy powder coat
- Aluminum receptacles: ceramic burnished
- Cord connector housings and caps: epoxy powder coat

### NEC/CEC Certifications and Compliances

- UL Standard: UL 1010 (UL 1203), UL 894, UL 1682, UL 1686
- UL Listed: E10784
- CSA Standard: C22. No 30, C22.2 No. 159, C22.2 No 182.1
- CSA Certified: 038644



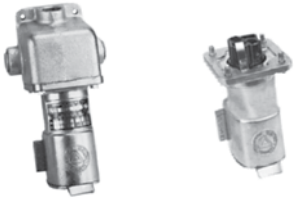
# CES and CESD Factory Sealed Receptacles

## 30 and 60 Amp Pin and Sleeve. Explosionproof

Delayed-Action Safety Construction with Slide-Lok® Design. Pressure Wire Terminals.


NEC/CEC — 30 Amp CES and CESD:  
Class I, Division 1 and 2, Groups C, D

NEC/CEC — 60 Amp CESD:  
Class I, Division 1 and 2, Groups D


		Catalog Number						
	Amp	Wire/Pole	Hub Size (Inches)	Complete With Box ①	Back Box Only	Receptacle Only ②	Replacement Interior	
<b>CES Receptacles — 30 Amp and 60 Amp, 125-250 Vac</b> (See HP ratings below.)								
Furnished with one vertical and two horizontal feed-thru hubs.								
 <b>CES</b> <b>CESR</b>	30	2W, 3P	3/4	<b>CES-3023</b>	<b>CES-30B</b>	<b>CESR-3023</b>	<b>CERI-3023</b>	
		3W, 4P	3/4	<b>CES-3034</b>	<b>CES-30B</b>	<b>CESR-3034</b>	<b>CERI-3034</b>	
	60	2W, 3P	1-1/4	<b>CES-6023</b>	<b>CES-60B</b>	<b>CESR-6023</b>	<b>CERI-6023</b>	
		3W, 4P	1-1/4	<b>CES-6034</b>	<b>CES-60B</b>	<b>CESR-6034</b>	<b>CERI-6034</b>	

### CESD Receptacles — 30 Amp and 60 Amp, 125-250 Vac

(See HP ratings below.)  
Furnished with vertical feed-thru hubs.

 <b>CESD</b> <b>CESR</b>	30	2W, 3P	3/4	<b>CESD-3023</b>	<b>CESD-30B</b>	<b>CESR-3023</b>	<b>CERI-3023</b>
		3W, 4P	3/4	<b>CESD-3034</b>	<b>CESD-30B</b>	<b>CESR-3034</b>	<b>CERI-3034</b>
	60	2W, 3P	1-1/4	<b>CESD-6023</b>	<b>CESD-60B</b>	<b>CESR-6023</b>	<b>CERI-6023</b>
		3W, 4P	1-1/4	<b>CESD-6034</b>	<b>CESD-60B</b>	<b>CESR-6034</b>	<b>CERI-6034</b>

### CPH Plugs and Plug Interiors for Use with Receptacles Above

		Amp	Wire/Pole	Cable Dia. (Inches)	Complete Plug	Replacement Interior
 <b>CPH Plug</b> (30 and 60 Amp) Pressure Terminals	30	2W, 3P	.390-1.375	<b>CPH3023BC</b>	<b>CEPI-3023B</b>	
		3W, 4P	.390-1.375	<b>CPH3034BC</b>	<b>CEPI-3034B</b>	
	60 ⑤	2W, 3P	.390-1.375	<b>CPH6023BC</b>	<b>CEPI-6023BC</b>	
		3W, 4P	.390-1.375	<b>CPH6034BC</b>	<b>CEPI-6034BC</b>	

### CES/CESD Maximum Horsepower Ratings

125-250 Vac					480③-600④ Vac				
Wire/Pole	Phase	Max. HP	Max. Amp	Catalog Number	Wire/Pole	Phase	Max. HP	Max. Amp	Catalog Number
2W, 3P	1	1-1/2	30	CES/CESD-3023	2W, 3P	1	1/2	7	CES/CESD-3023
3W, 4P	3	3	30	CES/CESD-3034	3W, 4P	3	1	7	CES/CESD-3034
2W, 3P	1	1-1/2	60	CES/CESD-6023	2W, 3P	1	1-1/2	30	CES/CESD-6023
3W, 4P	3	5	60	CES/CESD-6034	3W, 4P	3	5	30	CES/CESD-6034

① UL Listed with Mounting Box.

② NOT UL Listed. Only UL Listed when Receptacle is provided with Mounting Box.

③ 480 Vac is certified by UL for NEC.

④ 600 Vac is certified by CSA for CEC.

⑤ 60 Amp CPH plugs with -BC suffix are NOT UL listed.

# CES and CESD Factory Sealed Receptacles

## 30 and 60 Amp Pin and Sleeve. Explosionproof

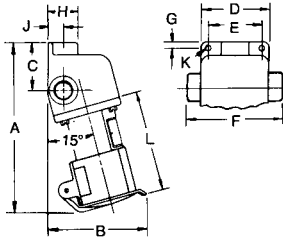
Delayed-Action Safety Construction with Slide-Lok® Design. Pressure Wire Terminals.

NEC/CEC — 30 Amp CES and CESD:  
Class I, Division 1 and 2, Groups C, D

NEC/CEC — 60 Amp CESD:  
Class I, Division 1 and 2, Groups D

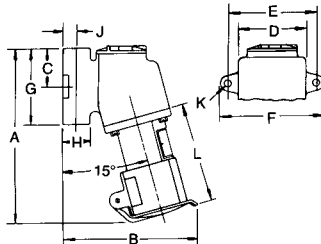
### Dimensions in Millimeters (Inches)

#### CES Receptacles



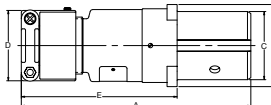
Hub Size (Inches)	Max. Amp	Dimensions in Millimeters (Inches)										
		A	B	C	D	E	F	G	H	J	K	L
3/4	30	211.0 (8.31)	125.4 (4.94)	60.4 (2.38)	85.8 (3.38)	66.8 (2.63)	119.1 (4.69)	7.8 (0.31)	38.1 (1.50)	19.8 (0.78)	4/1 $\phi$	128.7 (5.07)
1-1/4	60	301.7 (11.88)	174.7 (6.88)	73.1 (2.88)	133.3 (5.25)	111.2 (4.38)	185.6 (7.31)	11.1 (0.44)	65.0 (2.56)	35.0 (1.38)	32/13 $\phi$	180.3 (7.10)

#### CESD Receptacles



Hub Size (Inches)	Max. Amp	Dimensions in Millimeters (Inches)										
		A	B	C	D	E	F	G	H	J	K	L
3/4	30	220.7 (8.69)	171.4 (6.75)	47.7 (1.88)	85.8 (3.38)	111.2 (4.38)	130.3 (5.13)	95.2 (3.75)	35.0 (1.38)	17.5 (0.69)	32/11 $\phi$	128.7 (5.07)
1-1/4	60	323.8 (12.75)	236.4 (9.31)	81.0 (3.19)	133.3 (5.25)	158.7 (6.25)	184.1 (7.25)	160.2 (6.31)	65.0 (2.56)	35.0 (1.38)	32/11 $\phi$	180.3 (7.10)

#### CPH Plugs



Max. Amp	Wire/Pole	Dimensions in Millimeters (Inches)				
		A	B	C	D	E
30	2W, 3P; 3W, 4P	155.7 (6.13)	60.4 (2.38)	47.2 (1.86)	6.68 (2.63)	113.7 (4.44)
60	2W, 3P	123.9 (8.44)	77.7 (3.06)	56.6 (2.23)	6.68 (2.63)	144.5 (5.69)
60	3W, 4P	123.9 (8.44)	77.7 (3.06)	64.7 (2.55)	6.68 (2.63)	144.5 (5.69)